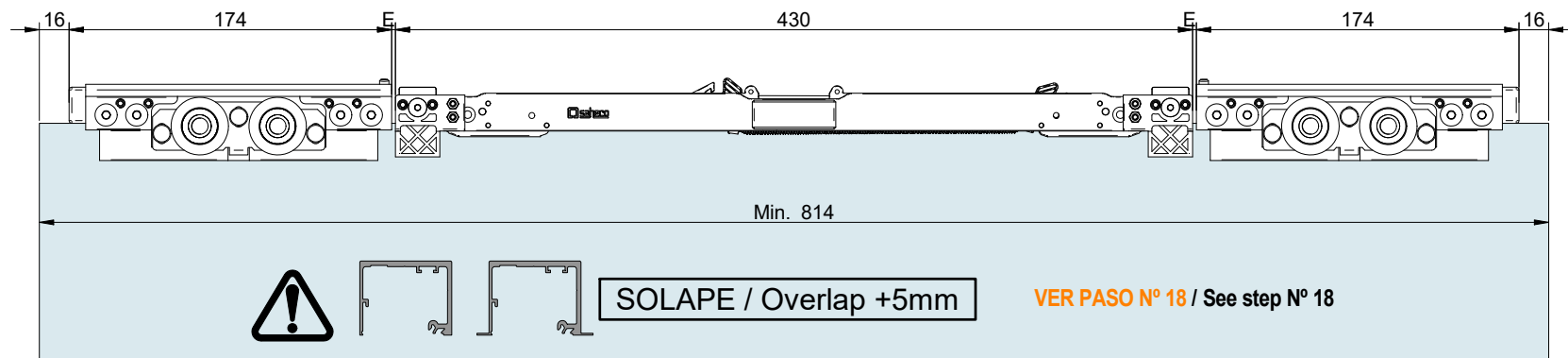
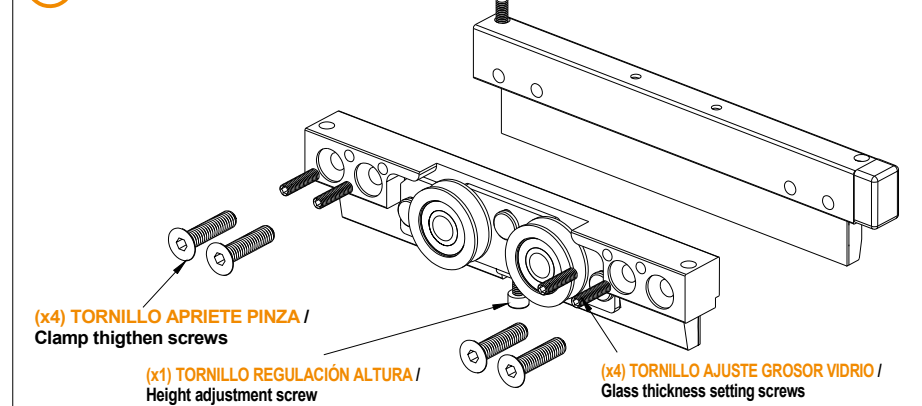




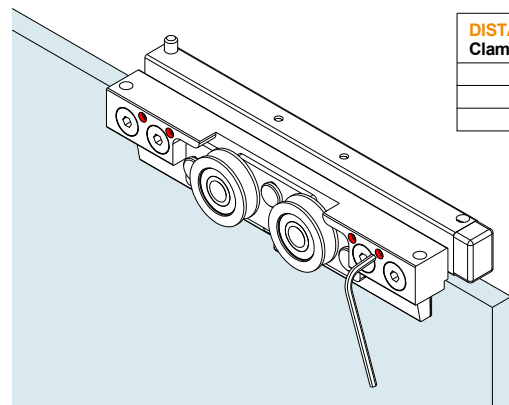
**1 MONTAJE PINZAS / Clamps assembly**



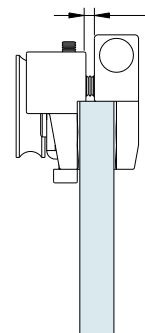
**2 (x1) TORNILLO ANTIDESCARRILAMIENTO / Anti-derrailment screw**



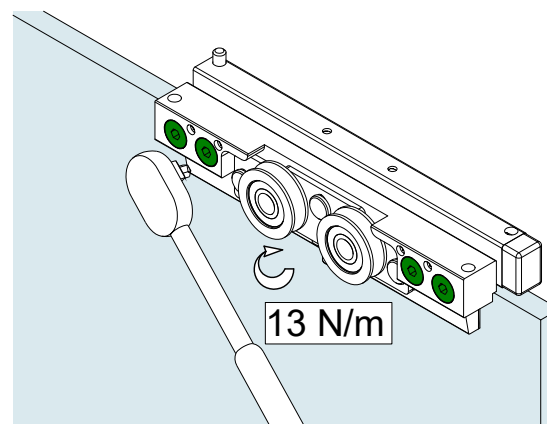
**3 PRIMER PASO: AJUSTAR TORNILLOS AJUSTE GROSOR VIDRIO / First step: Adjust glass thickness screws**



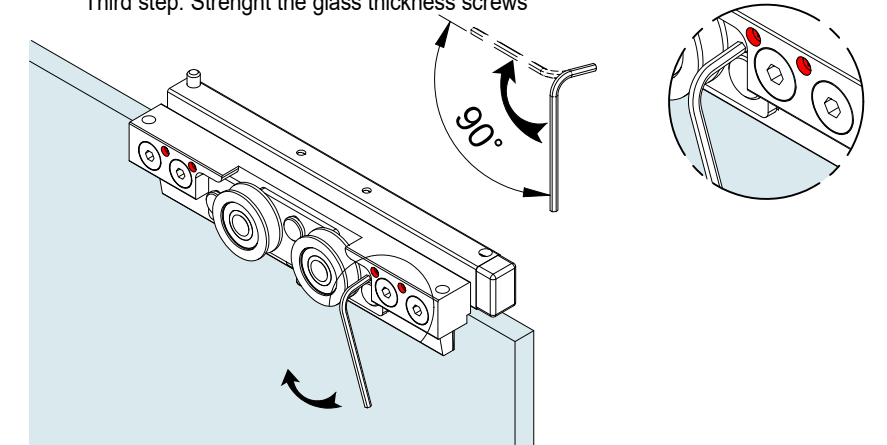
DISTANCIA PINZAS / Clamps distance	GRUESO VIDRIO / Glass thickness
2mm	10mm
5mm	12mm
7mm	14mm



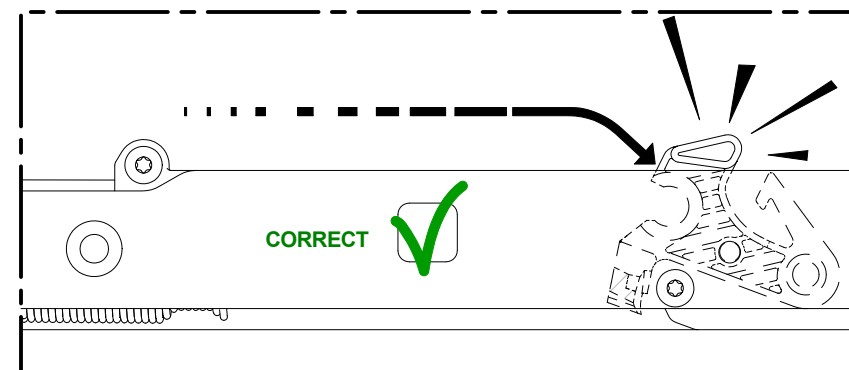
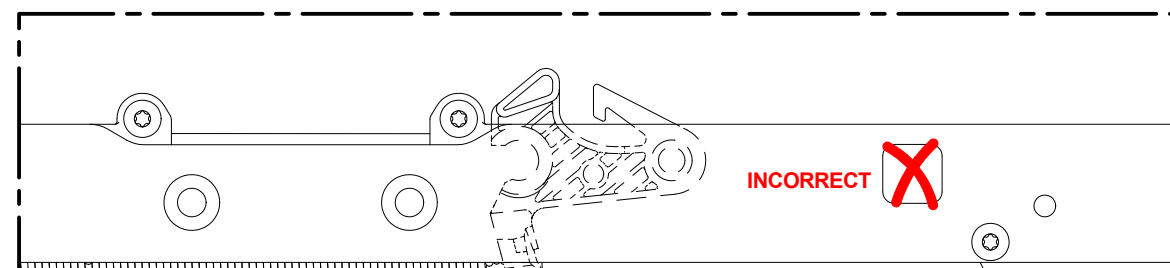
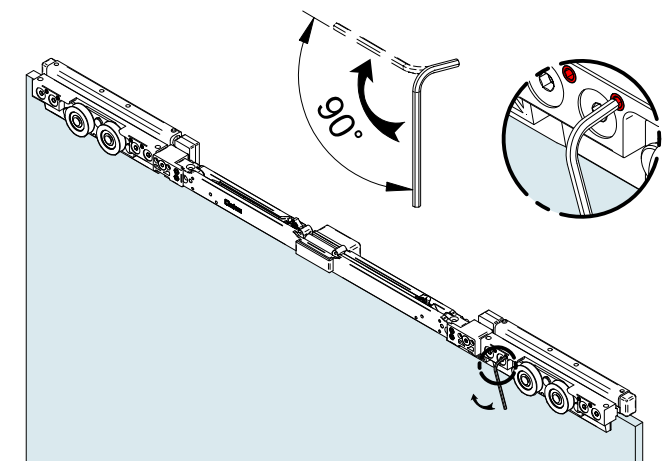
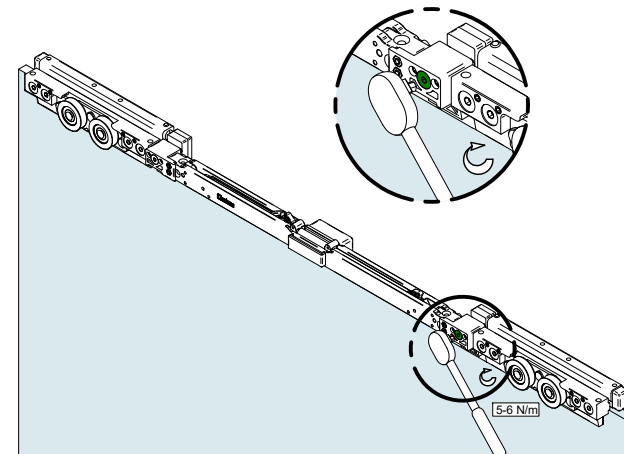
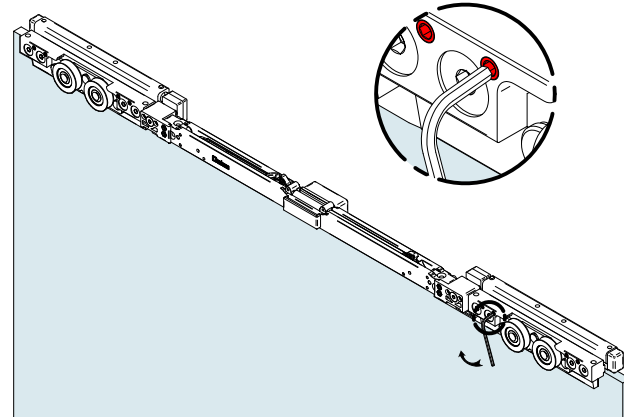
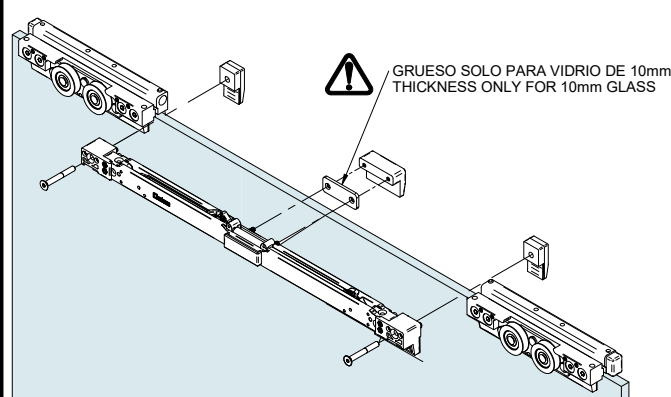
**4 SEGUNDO PASO: APRETAR TORNILLOS APRIETE PINZA / Second step: Strenght clamp thigten screws**



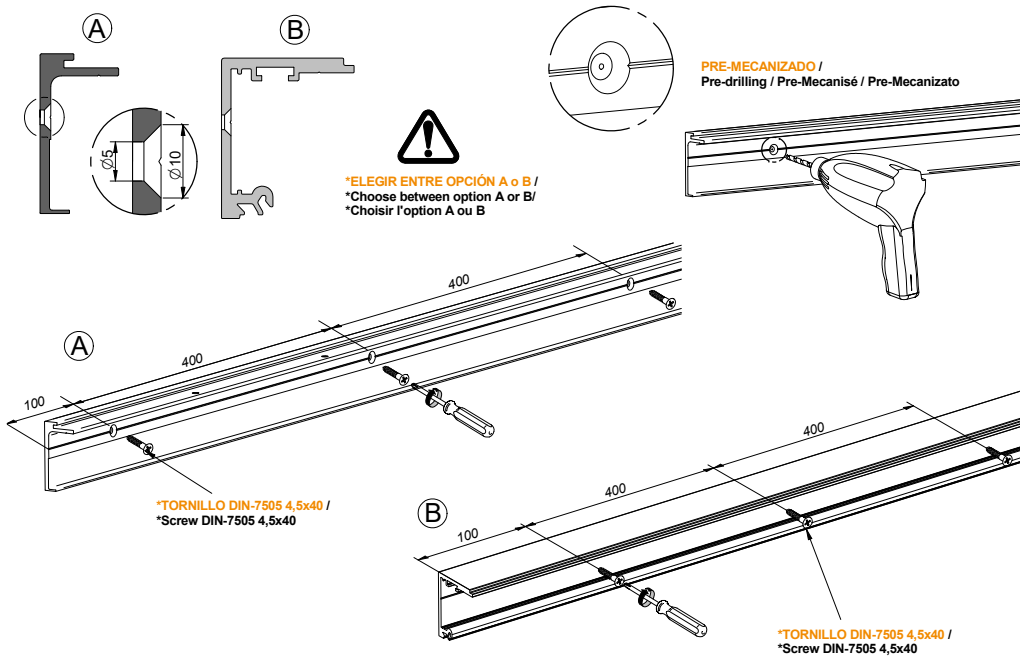
**5 TERCER PASO: APRETAR TORNILLOS AJUSTE GROSOR VIDRIO / Third step: Strenght the glass thickness screws**



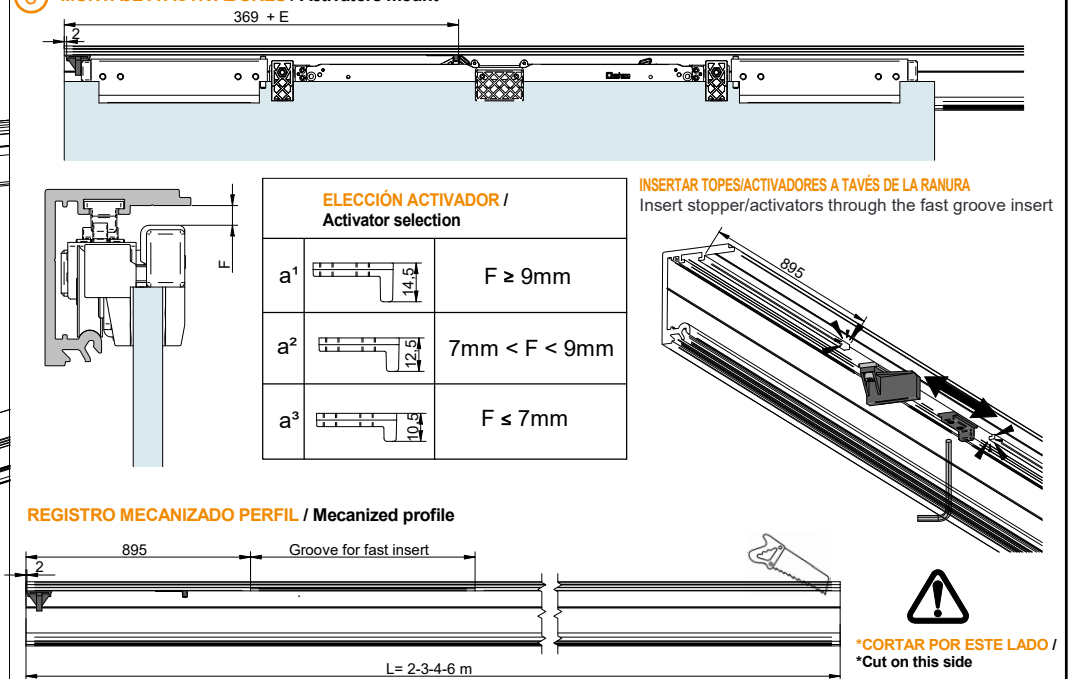
**6 MONTAJE SOFTOP / Softop Assembly**



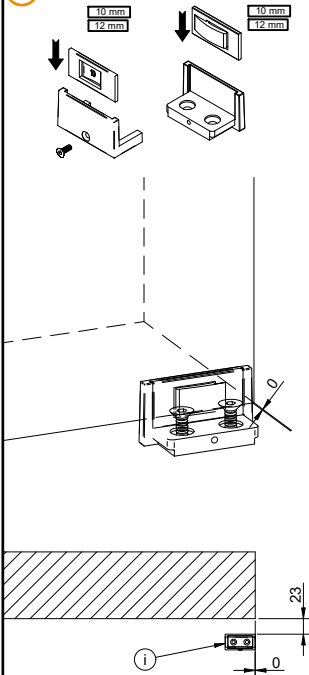
**7 MONTAJE A PARED / Wall mount / Assemblage a mur / Montaggio a muro**



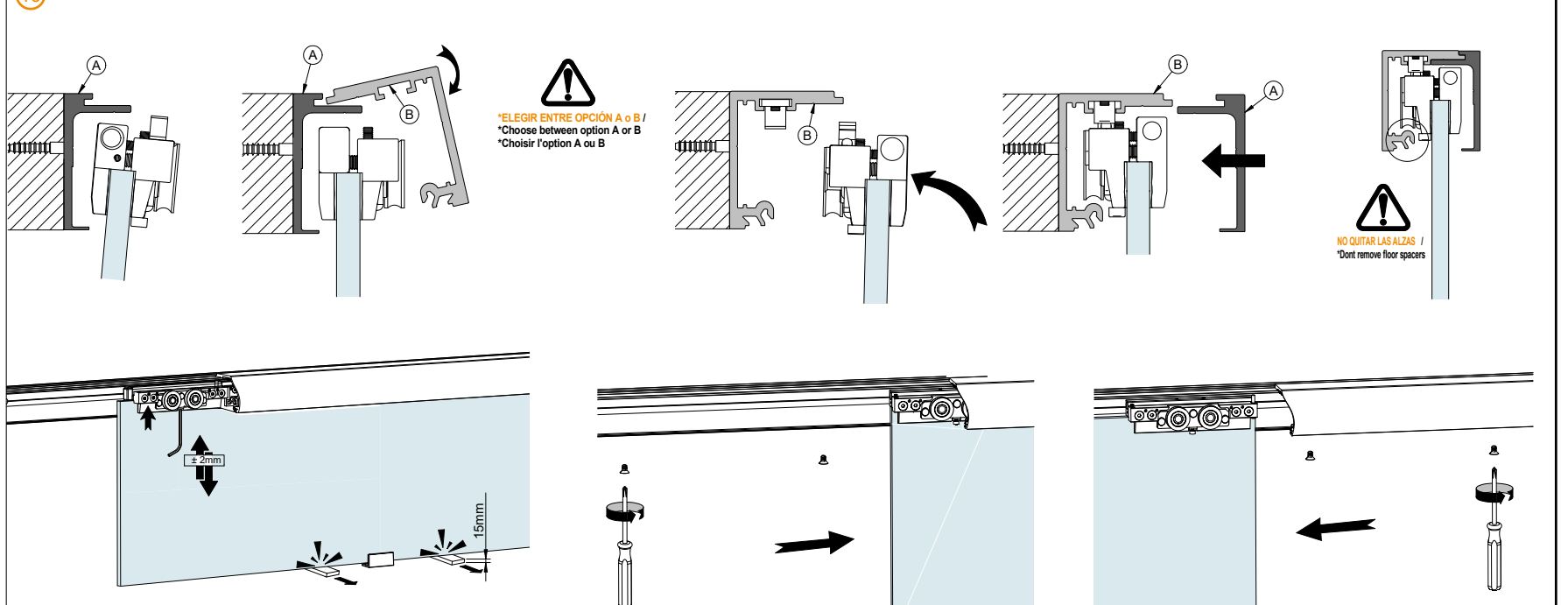
**8 MONTAJE A ACTIVADORES / Activators mount**



**9 GUIADOR / Guide/ Guide**



**10 MONTAJE HOJA / GLASS ASSEMBLY / ASSEMBLAGE DU VERRE / MONTAGGIO DEL VETTRO**

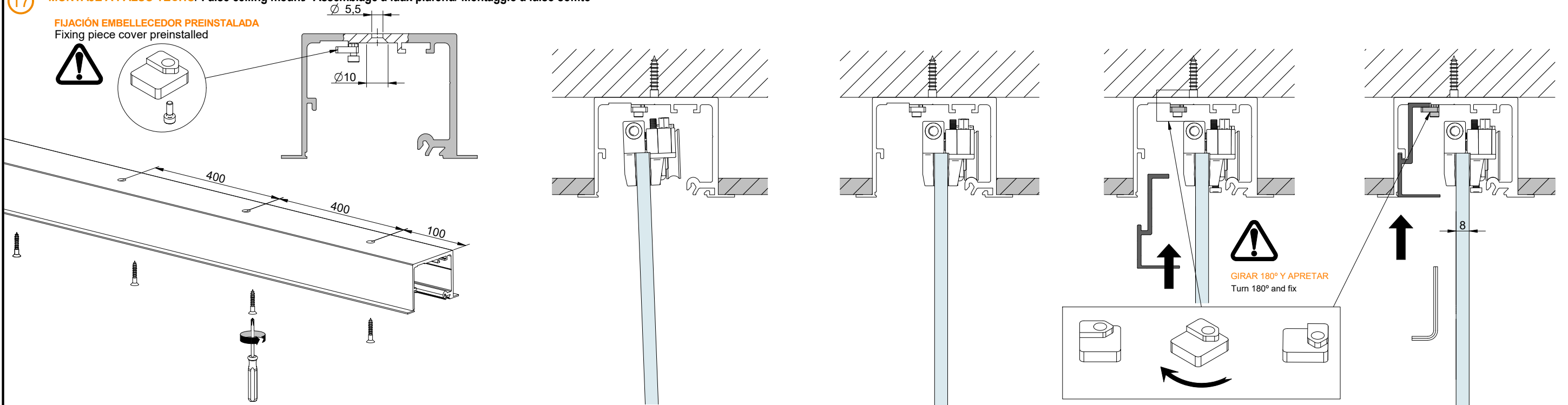




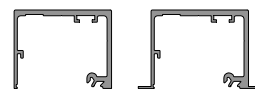
VARIANTES DE INSTALACIÓN/ Installation variants/ Variantes de installation

17 MONTAJE A FALSO TECHO/ False ceiling mount/ Assemblage a faux plafond/ Montaggio a falso soffitto

FIJACIÓN EMBELLECEDOR PREINSTALADA  
Fixing piece cover preinstalled



18 MONTAJE A FALSO TECHO CON VIDRIO FIJO/ False ceiling mount with fixed glass/Assemblage a faux plafond avec verre fixe/ Montaggio a falso soffitto con vetro fisso



PERFIL FRAME - PERFIL FRAME FT / profile Frame - Profile Frame FT

SOLAPE RECOMENDADO / Recommended Overlap

PARA VARIANTE FALSO TECHO CON VIDRIO FIJO MINIMO DE HOJA CORREDERA 834mm  
For false ceiling mount with fixed glass minimum size of sliding glass 834mm

